



Customer: CANVIVA
 Customer Sample ID: CANVIVA Digest 500mg Lot# 9F18
 Laboratory Number: 19G0046-08

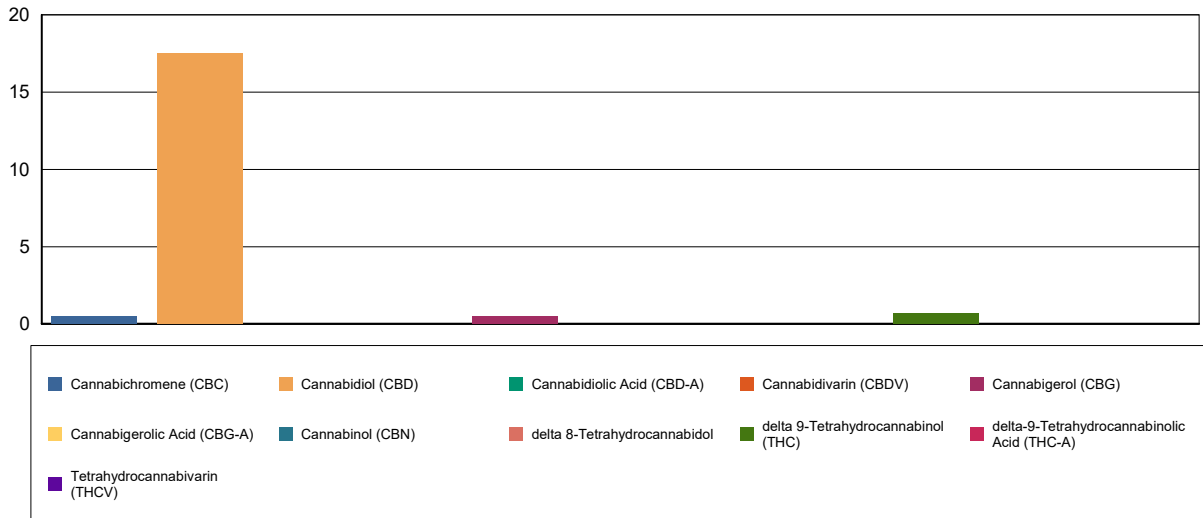
Cannabinoid Profile

Extraction Technician: CB
 Analytical Chemist: Altitude

Extraction Date(s)	Analysis Date(s)
7/30/2019	7/30/2019

Cannabinoids (HPLC)		Results	
	LOD (mg/mL)	%	mg/mL
Cannabidivarin (CBDV)	<0.0920		
Cannabidiolic Acid (CBD-A)	<0.0920		
Cannabigerolic Acid (CBG-A)	<0.0920		
Cannabigerol (CBG)		0.06	0.513
Cannabidiol (CBD)		1.91	17.5
Tetrahydrocannabivarin (THCV)	<0.0920		
Cannabinol (CBN)	<0.0920		
delta 9-Tetrahydrocannabinol (THC)		0.08	0.693
delta 8-Tetrahydrocannabinol	<0.0920		
Cannabichromene (CBC)		0.05	0.471
delta-9-Tetrahydrocannabinolic Acid (THC-A)	<0.0920		
Cannabinoids Total		%	mg/mL
Max Active THC		0.08	0.69
Max Active CBD		1.91	17.50
T.Active Cannabinoids		2.09	19.3
Total Cannabinoids		2.09	19.3
Ratios			
25.31:1 CBD to THC		0.04:1 THC to CBD	

Cannabinoid (mg/mL)



Altitude Consulting, LLC utilizes NIST traceable Reference Standards and Certified Reference Material to calibrate analytical instruments along with proven analytical methods . The methods are applied in the most ethical manner following good laboratory practice guidelines. The results of this report are based solely on the sample submitted and cannot be reproduced.



Customer: **CANVIVA**
 Customer Sample ID: **CANVIVA Digest 500mg Lot# 9F18**
 Laboratory Number: **19G0046-08**

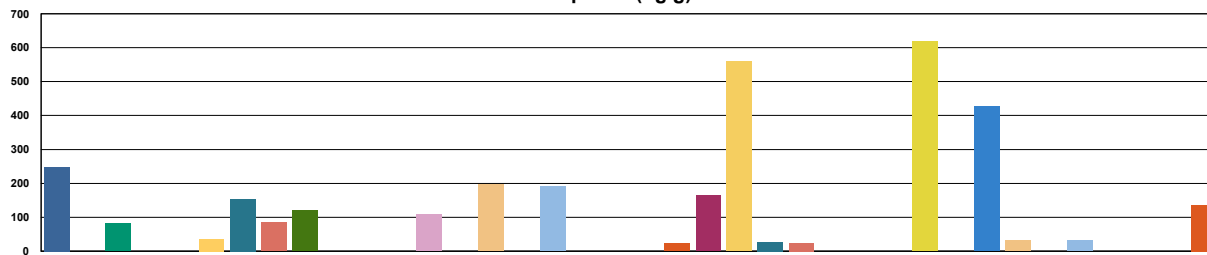
Terpene Profile

Extraction Technician: CB
 Analytical Chemist: GB

Extraction Date(s)	Analysis Date(s)
7/30/2019	7/30/2019

Terpene	Results	Terpene	Results
	ug/g		ug/g
alpha-Pinene	249	Isoborneol	
Camphene	81.3	Hexahydrothymol	
Sabinene		(+)-Borneol and (-)-Borneol	
beta-Pinene and beta-Myrcene	154	alpha-Terpineol	85.2
p-Mentha-1,5-diene	120	gamma-Terpeneol	
(1S)-(+)-3-Carene		Nerol	
alpha-Terpinene	107	Geraniol	
Ocimene Peak 1	196	(+)-Pulegone	
(R) - (+)-Limonene	190	Geranyl Acetate	
Ocimene Peak 2		alpha-Cedrene	
Eucalyptol (1,8-Cineole)	22.6	trans-Caryophyllene	164
gamma-Terpinene	559	alpha-Humulene	27.4
Sabinene Hydrate	24.2	Valencene	
Terpinolene		cis-Nerolidol	
Linalool	619	trans-Nerolidol	
(+)-Fenchone and L(-)-Fenchone	427	Guaiol	31.5
(1R)-Endo-(+)-Fenchyl		(-)-Caryophyllene Oxide	32.3
(-)-Isopulegol		(+)-Cedrol	
Camphor and (1S)-(-)-Camphor		(-)-alpha-Bisabolol (Levomenol)	137

Terpenes (ug/g)



- alpha-Pinene
- Camphene
- Sabinene
- beta-Pinene and beta-Myrcene
- p-Mentha-1,5-diene
- (1S)-(+)-3-Carene
- alpha-Terpinene
- Ocimene Peak 1
- (R) - (+)-Limonene
- Ocimene Peak 2
- Eucalyptol (1,8-Cineole)
- gamma-Terpinene
- Sabinene Hydrate
- Terpinolene
- Linalool
- (+)-Fenchone and L(-)-Fenchone
- (1R)-Endo-(+)-Fenchyl
- (-)-Isopulegol
- Camphor and (1S)-(-)-Camphor
- Isoborneol
- Hexahydrothymol
- (+)-Borneol and (-)-Borneol
- alpha-Terpineol
- gamma-Terpeneol
- Nerol
- Geraniol
- (+)-Pulegone
- Geranyl Acetate
- alpha-Cedrene
- trans-Caryophyllene
- alpha-Humulene
- Valencene
- cis-Nerolidol
- trans-Nerolidol
- Guaiol
- (-)-Caryophyllene Oxide
- (+)-Cedrol
- (-)-alpha-Bisabolol (Levomenol)

Reporting limit is roughly 40 ug/g depending on amount extracted.

Altitude Consulting, LLC utilizes NIST traceable Reference Standards and Certified Reference Material to calibrate analytical instruments along with proven analytical methods. The methods are applied in the most ethical manner following good laboratory practice guidelines. The results of this report are based solely on the sample submitted and cannot be reproduced.