



Customer: CANVIVA
Customer Sample ID: CANVIVA Boost 500mg Lot# 9F15
Laboratory Number: 19G0046-04

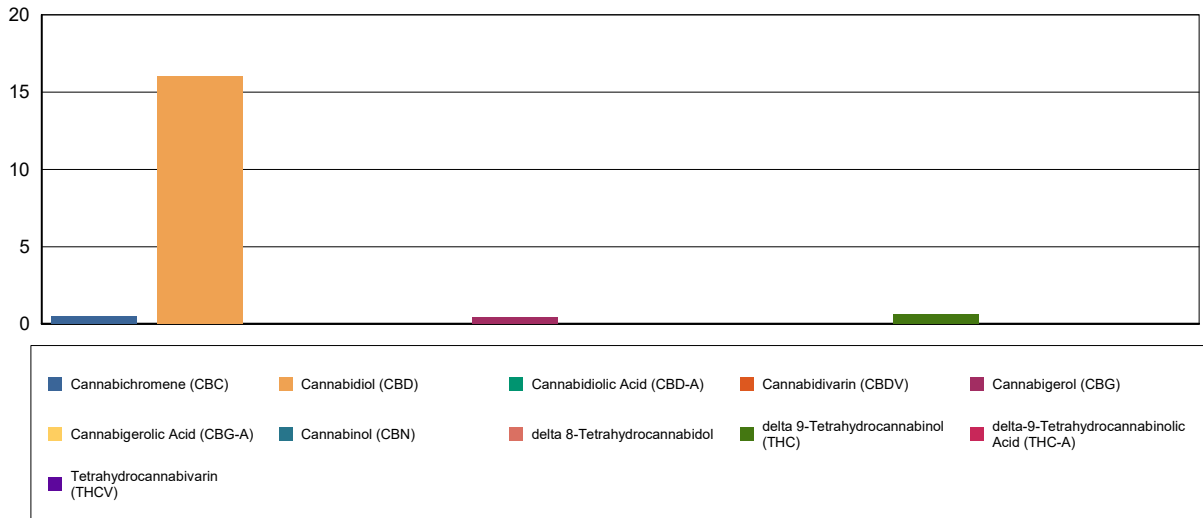
Cannabinoid Profile

Extraction Technician: CB
Analytical Chemist: Altitude

Extraction Date(s)	Analysis Date(s)
7/30/2019	7/30/2019

Cannabinoids (HPLC)		Results	
	LOD (mg/mL)	%	mg/mL
Cannabidivarin (CBDV)	<0.0828		
Cannabidiolic Acid (CBD-A)	<0.0828		
Cannabigerolic Acid (CBG-A)	<0.0828		
Cannabigerol (CBG)		0.05	0.433
Cannabidiol (CBD)		1.74	16.0
Tetrahydrocannabivarin (THCV)	<0.0828		
Cannabinol (CBN)	<0.0828		
delta 9-Tetrahydrocannabinol (THC)		0.07	0.622
delta 8-Tetrahydrocannabinol	<0.0828		
Cannabichromene (CBC)		0.06	0.507
delta-9-Tetrahydrocannabinolic Acid (THC-A)	<0.0828		
Cannabinoids Total		%	mg/mL
Max Active THC		0.07	0.62
Max Active CBD		1.74	16.00
T.Active Cannabinoids		1.92	17.7
Total Cannabinoids		1.92	17.7
Ratios			
25.80:1 CBD to THC		0.04:1 THC to CBD	

Cannabinoid (mg/mL)



Altitude Consulting, LLC utilizes NIST traceable Reference Standards and Certified Reference Material to calibrate analytical instruments along with proven analytical methods. The methods are applied in the most ethical manner following good laboratory practice guidelines. The results of this report are based solely on the sample submitted and cannot be reproduced.



Customer: **CANVIVA**
 Customer Sample ID: **CANVIVA Boost 500mg Lot# 9F15**
 Laboratory Number: **19G0046-04**

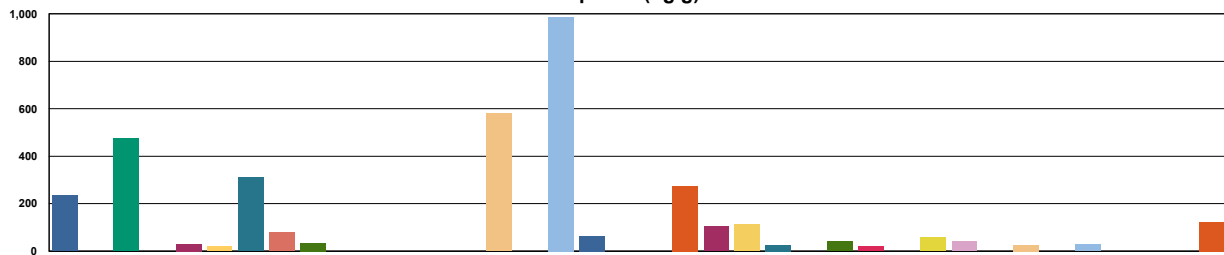
Terpene Profile

Extraction Technician: CB
 Analytical Chemist: GB

Extraction Date(s)	Analysis Date(s)
7/30/2019	7/30/2019

Terpene	Results	Terpene	Results
	ug/g		ug/g
alpha-Pinene	236	Isoborneol	
Camphene	474	Hexahydrothymol	
Sabinene	31.4	(+)-Borneol and (-)-Borneol	
beta-Pinene and beta-Myrcene	309	alpha-Terpineol	79.6
p-Mentha-1,5-diene	34.5	gamma-Terpineol	
(1S)-(+)-3-Carene		Nerol	
alpha-Terpinene		Geraniol	
Ocimene Peak 1	579	(+)-Pulegone	
(R) - (+)-Limonene	986	Geranyl Acetate	65.3
Ocimene Peak 2		alpha-Cedrene	
Eucalyptol (1,8-Cineole)	274	trans-Caryophyllene	104
gamma-Terpinene	112	alpha-Humulene	27.2
Sabinene Hydrate		Valencene	42.3
Terpinolene	21.0	cis-Nerolidol	
Linalool	57.0	trans-Nerolidol	40.0
(+)-Fenchone and L(-)-Fenchone		Guaiol	26.9
(1R)-Endo-(+)-Fenchyl		(-)-Caryophyllene Oxide	28.8
(-)-Isopulegol		(+)-Cedrol	
Camphor and (1S)-(-)-Camphor		(-)-alpha-Bisabolol (Levomenol)	124

Terpenes (ug/g)



- alpha-Pinene
- Camphene
- Sabinene
- beta-Pinene and beta-Myrcene
- p-Mentha-1,5-diene
- (1S)-(+)-3-Carene
- alpha-Terpinene
- Ocimene Peak 1
- (R) - (+)-Limonene
- Ocimene Peak 2
- Eucalyptol (1,8-Cineole)
- gamma-Terpineol
- Sabinene Hydrate
- Terpinolene
- Linalool
- (+)-Fenchone and L(-)-Fenchone
- (1R)-Endo-(+)-Fenchyl
- (-)-Isopulegol
- Camphor and (1S)-(-)-Camphor
- Isoborneol
- Hexahydrothymol
- (+)-Borneol and (-)-Borneol
- alpha-Terpineol
- gamma-Terpineol
- Nerol
- Geraniol
- (+)-Pulegone
- Geranyl Acetate
- alpha-Cedrene
- trans-Caryophyllene
- alpha-Humulene
- Valencene
- cis-Nerolidol
- trans-Nerolidol
- Guaiol
- (-)-Caryophyllene Oxide
- (+)-Cedrol
- (-)-alpha-Bisabolol (Levomenol)

Reporting limit is roughly 40 ug/g depending on amount extracted.

Altitude Consulting, LLC utilizes NIST traceable Reference Standards and Certified Reference Material to calibrate analytical instruments along with proven analytical methods. The methods are applied in the most ethical manner following good laboratory practice guidelines. The results of this report are based solely on the sample submitted and cannot be reproduced.